

SYNETA LEAF BEETLE Coleoptera: Chrysomelidae *Syneta albida*

DESCRIPTION

Adults are 8 to 10 mm long, slender, ranging in color from pale yellowish-white to dull yellowish-brown, and often with darker stripes on the wing covers. **Larvae** are grub-like, white, with a brown head. The **eggs** are white and oval-shaped.

ECONOMIC IMPORTANCE

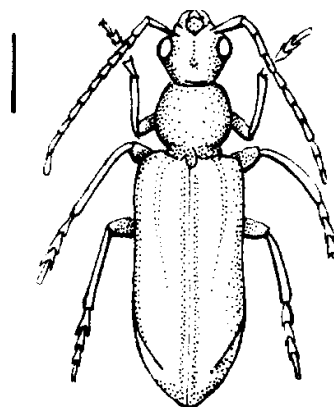
Adults feed on developing fruit causing scars and deformed fruit. The beetles also feed on buds, blossoms, and leaves, and chew the stems of fruit causing some of the fruit to drop. The most severe injury occurs on cherry, but beetles also attack pear, plum, prune, apple, and various shade and nut trees. Larvae feed on fibrous roots of trees generally causing minor injury.

DISTRIBUTION AND LIFE HISTORY

The syneta beetle is distributed west of the Cascade Mountains. This pest overwinters as a larva in the soil. Pupation occurs in late February or early March and adults begin emerging in April and can be found in the field until mid-June. Eggs are dropped on the ground, and hatch into small larvae in about two months. Larvae burrow into the soil, where they feed on the fibrous roots of hosts during the late summer and early fall. When mature, larvae construct earthen cells and overwinter. There is one generation each year.

MANAGEMENT AND CONTROL

The use of registered insecticides is the only effective method of reducing the damage caused by adult beetles. However, since this pest does not occur in every orchard every season, growers should look for beetles and evidence of early injury in late March or early April before applying an insecticide. If an insecticide is needed, one application should be made just before the blossoms open, and another just after the petals have dropped. In nut crops, when infestations are high, a third application may be needed just after the husks have fallen. The application made just after blooming is the most effective.



(after Houk)

