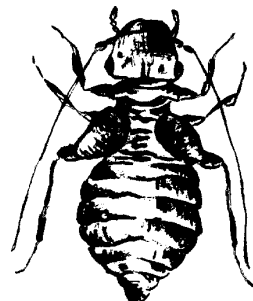


**BOOKLICE Psocoptera: Liposcelidae Cereal Psocid *Liposcelis divinatorius*,
Psocoptera: Trogiidae *Lepinotus inquilinus***

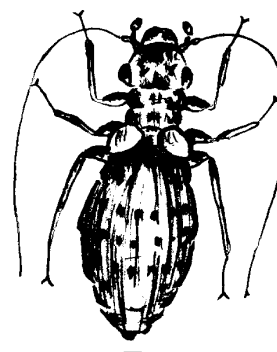
DESCRIPTION

Psocids are about 1 to 2 mm long and range in color from pale white (nearly colorless) to gray or light brown. All adults have vestigial wings that are not fully developed in most species that live indoors. The cereal psocid is parthenogenetic, but most psocids reproduce sexually.



ECONOMIC IMPORTANCE

Psocids prefer damp, warm, undisturbed areas. They may become a nuisance pest in homes during the spring and summer. Psocids may be introduced into homes from furniture, boxes, books, and paper. Once in the building, they may be found in cupboards where they may infest cereals and sugar, behind baseboards, and in paper or books.



DISTRIBUTION AND LIFE HISTORY

Psocids are distributed worldwide both outdoors and indoors. Eggs are deposited near or on food material. Eggs hatch in about 21 days. In some cool climates, the eggs serve as the overwintering stage. Nymphs feed for two to four weeks before becoming adults (nymphs also may overwinter). Adults lay an average of 20 to 50 eggs. The total life cycle requires anywhere from three weeks to 15 weeks.

MANAGEMENT AND CONTROL

Psocids seldom require direct treatment. Usually, good sanitation practices will eliminate infestations or keep them at low population densities. Treatments for cockroaches, silverfish, and firebrats also control psocid infestations. If insecticides are required to control these pests, they should be applied by a licensed pesticide applicator.