



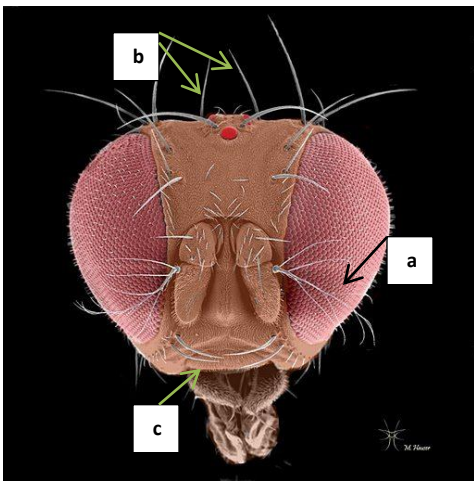
Common Adult Features of Family Drosophilidae –

Pomace/Vinegar flies

(not to be confused with true fruit flies, which are in the family Tephritidae)

Identifying *Drosophilidae*:

- **Body length:** 3-4 mm |----|
- **Body color:** golden or brownish to blackish colored body
- **Head ID features:**
 - a) Arista plumose (antennae branched)
 - b) Two postvertical bristles (located on back of head) converge
 - c) Oral vibrissae (pair of large bristles above mouth) well developed

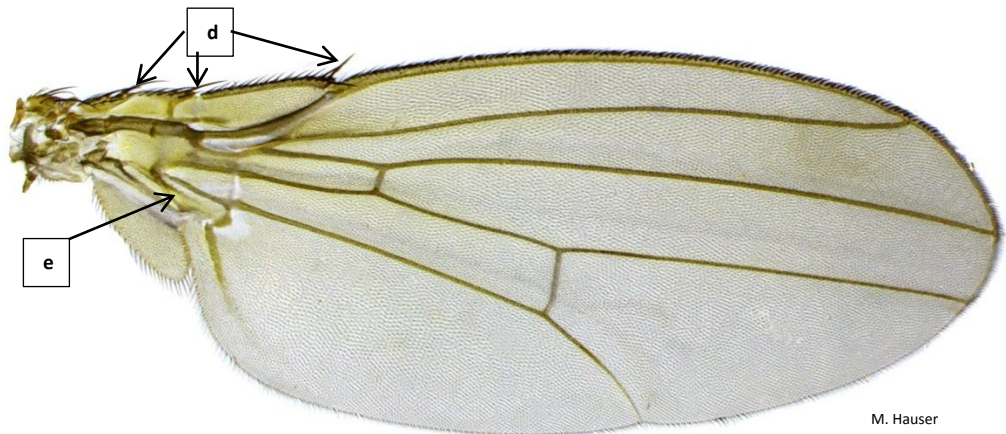


M. Hauser



K. Magnacca

- **Wing specifics:**
 - d) Three breaks in costa (top) vein
 - e) Anal cell present



M. Hauser

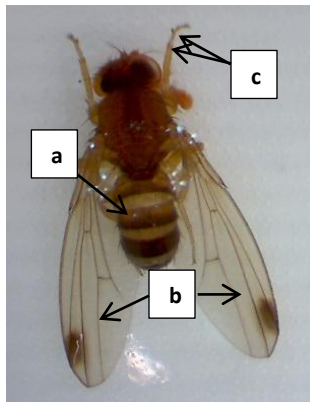
Identification characters specific to *Drosophila suzukii* (SWD)

Some important WEBSITES for SWD identification:

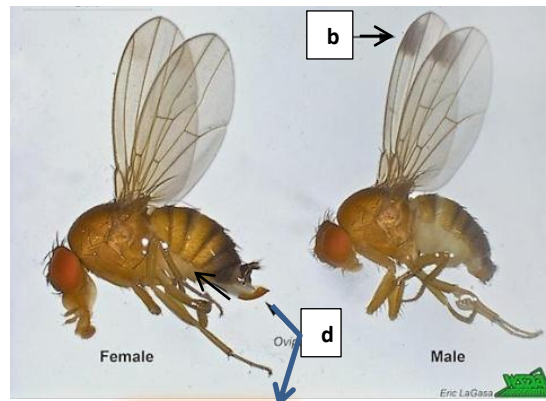
- Identification WEBINAR: http://www.gpdn.org/webinar_2012
- Dichotomous Identification Key: http://cms.oregon.gov/ODA/PLANT/docs/pdf/ippm_d_suzukii_id_guide10.pdf

Shared characters of both Male and Female SWD:

- See features shared by all *Drosophila* species.
- Markings: darkened thick or thin bands (a) around the abdominal segments. Bands are unbroken and complete. The last segment is sometimes solid dark brown. Reddish-brown eyes.
- No striped patterns or spots on body.



J. Christenson



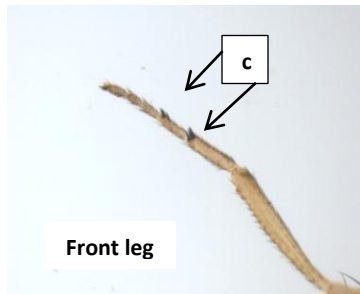
E. LaGasa

MALE

Can be slightly smaller in size than SWD females (see above right picture).

- b) Dark or smoky **spot** on the leading edge of the wing near tip- centered on the first major wing vein. Rarely are spots absent.
- c) Front legs with **two black combs** each.

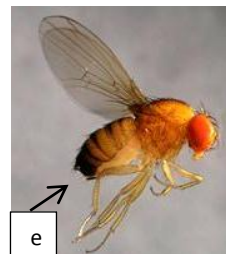
Combs have 3 to 6 teeth. Dark teeth run parallel to the length of leg.



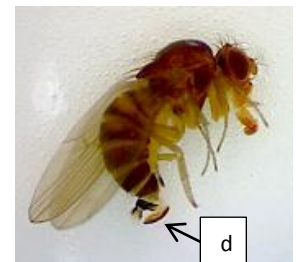
A. Ohrn

FEMALE

- d) Female has a slightly-curved **ovipositor** (egg-laying structure) on tail end which is large, hard, shiny, and dark. It has saw-like edges (ridged teeth) when fully exposed. Teeth are much darker than rest of ovipositor. May be tucked inside body (e). Females have no "spots", or darkened or shady areas on wing veins.



E. Beers



J. Christenson